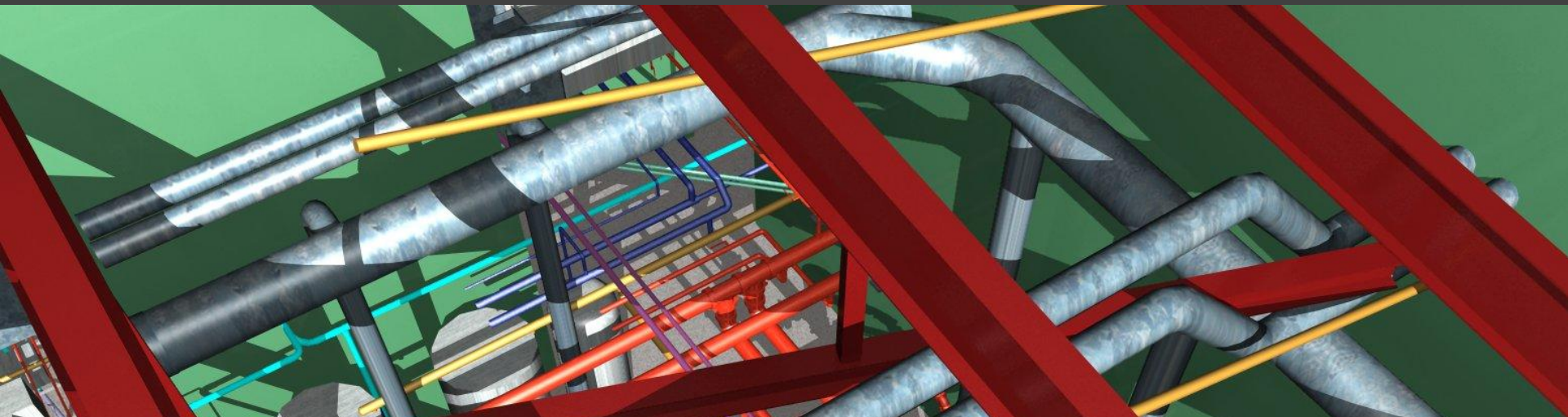


Integrating BIM into an Architectural Design Practice



Timeline

- Began in 2005
- Establish standards
- Smaller staff- 8 people
- Attended AIA Convention
- All users attended ½ day demo's of ADT and Revit
- Decision made as a group, not top down
- Why not use the current technology?



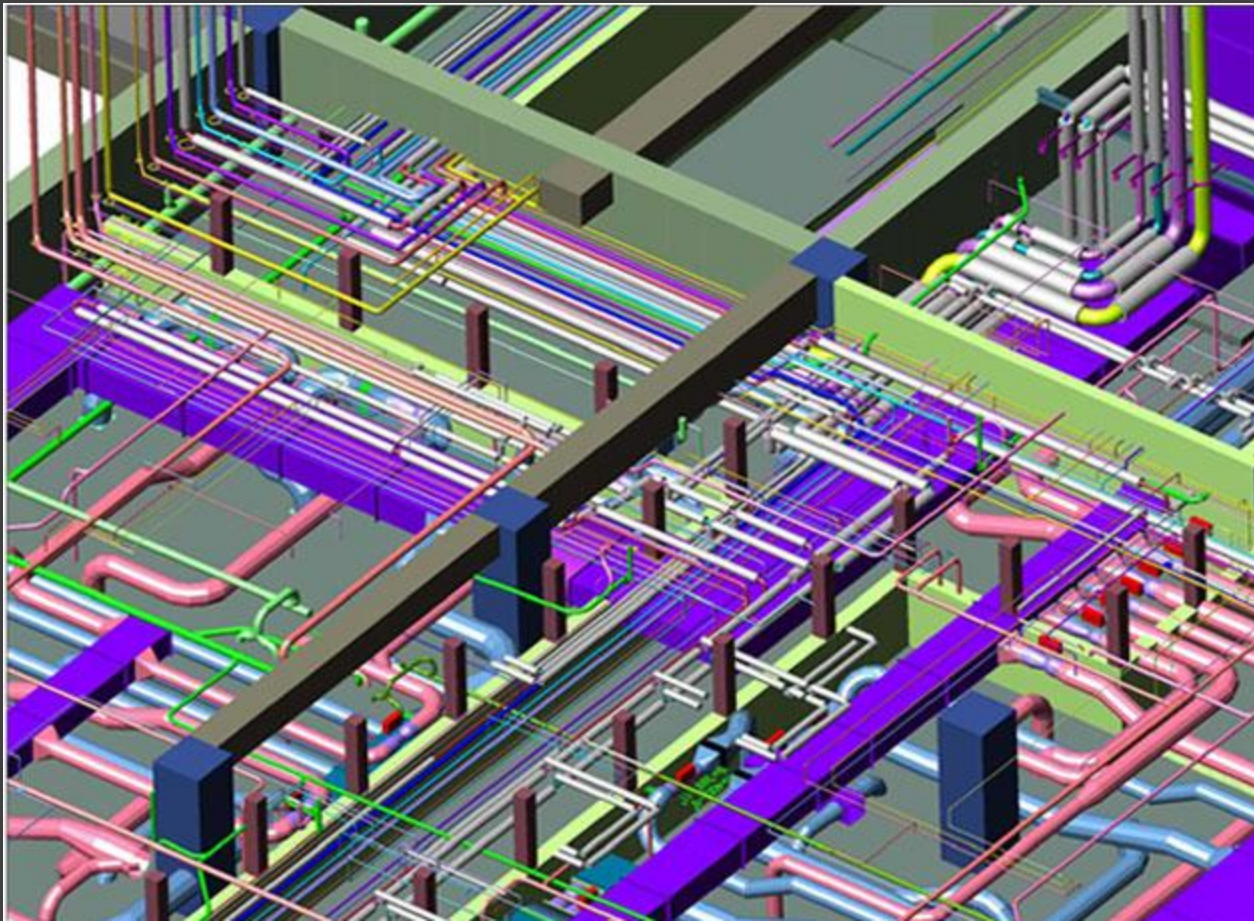
Why BIM

- 34% of firms on board (AIA Firm Study)
- Using 1 program for multiple tasks
- Terrific design tool
- LEED integration
- Do more, better, faster!



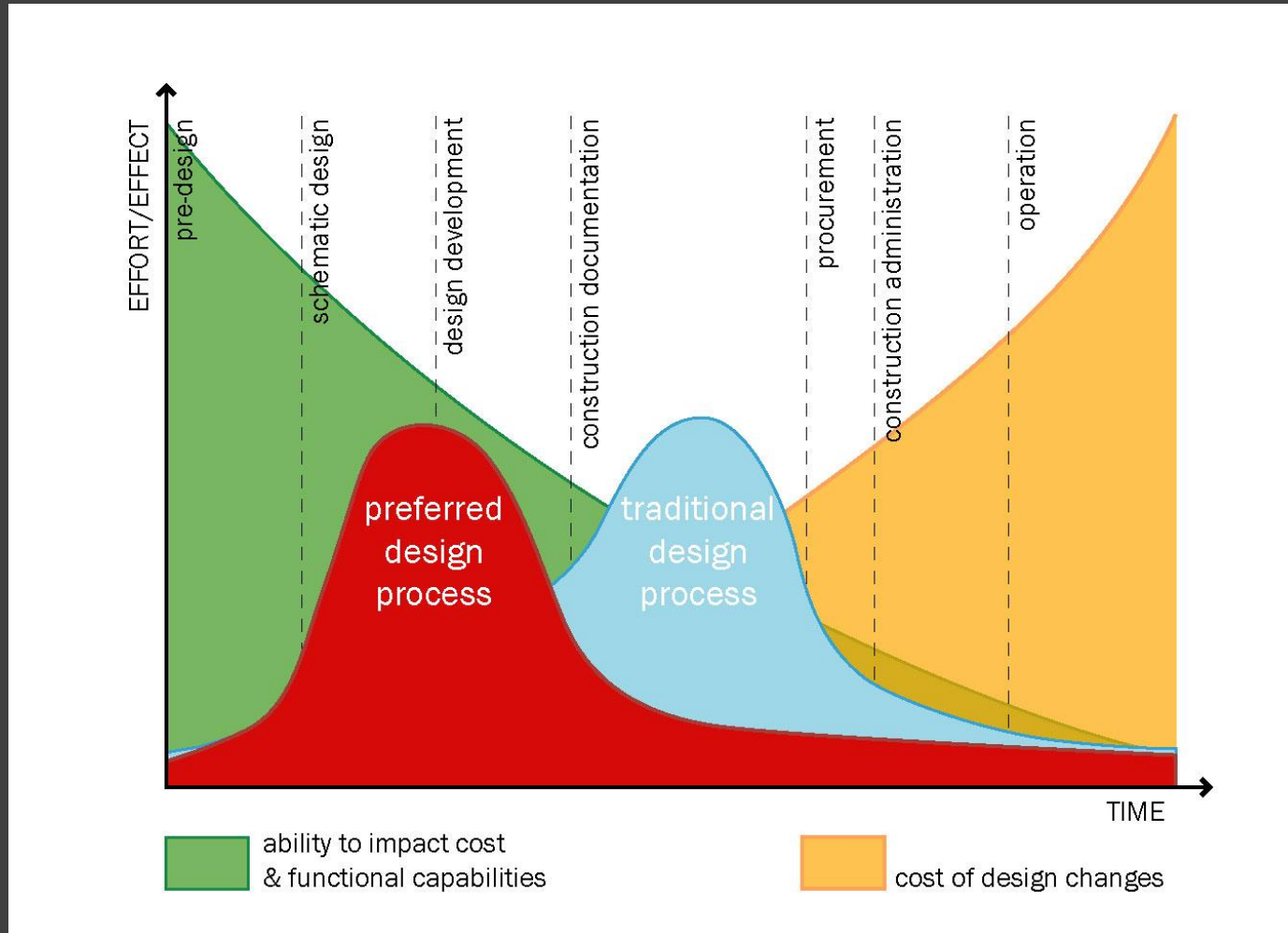
Which program?

- Do your homework
- Identify training options
- Life cycle cost vs initial cost



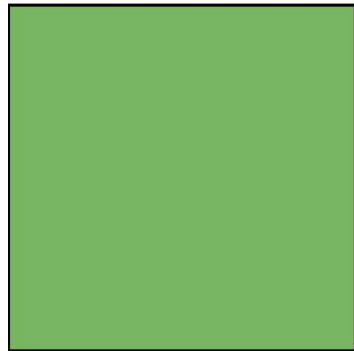
It is different

- Fee structure changes

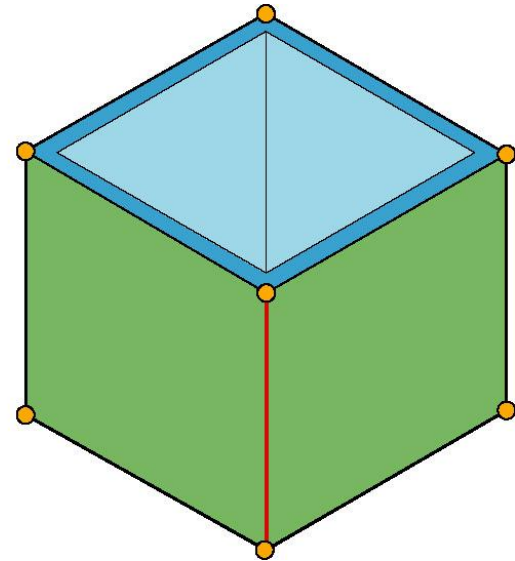


It is different

- Insurance and legal issues with sharing model
- Understanding what needs to be modeled
- Smart users



vs.



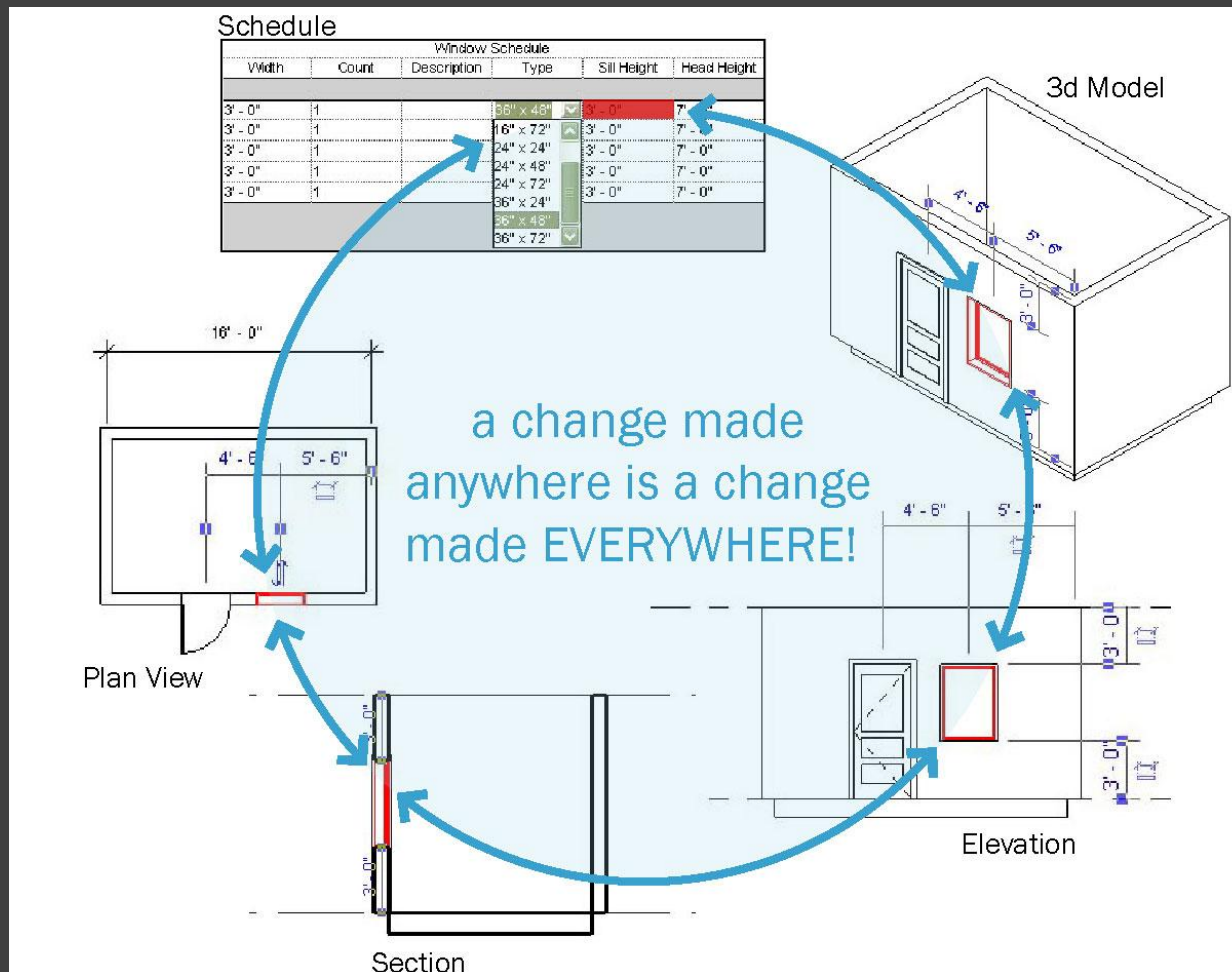
What you should know

- Steep learning curve
- Hit to productivity
- Crabby staff
- Consultants
- Cost
- File size
- Don't fudge
- Foggy factor



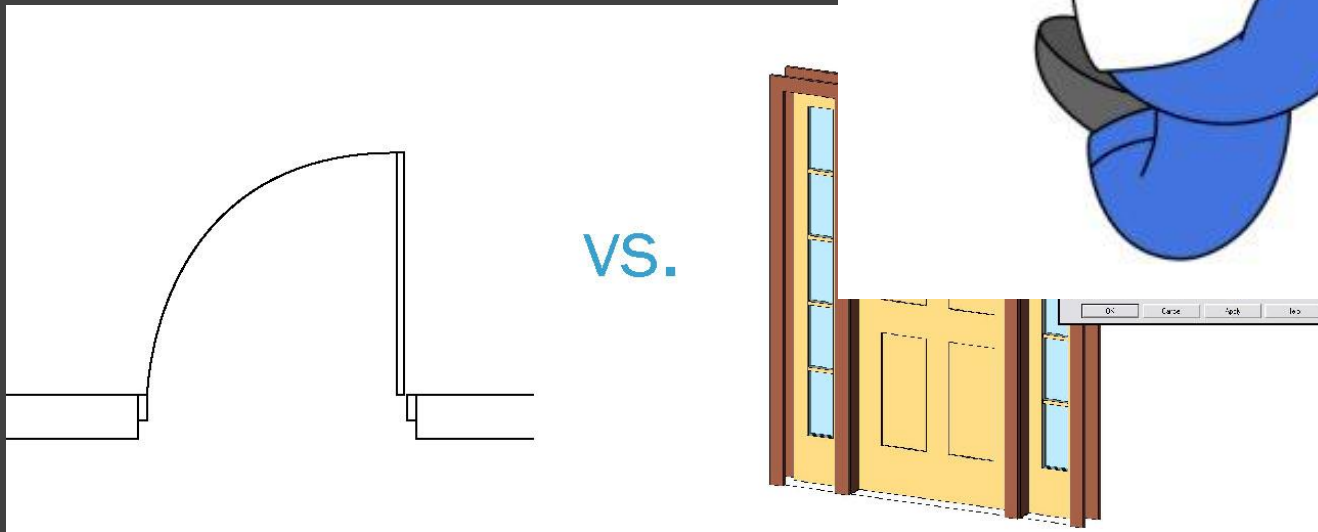
Pluses

- Draw stuff once



Pluses

- Coordination
- Faster
- Better designs
- Less CAD drudgery
- Newbies love it



How do you start

- Dive in!
- Lot of training
- Friend a user
- Provide tools
- Get buy-in
- Cheerleader



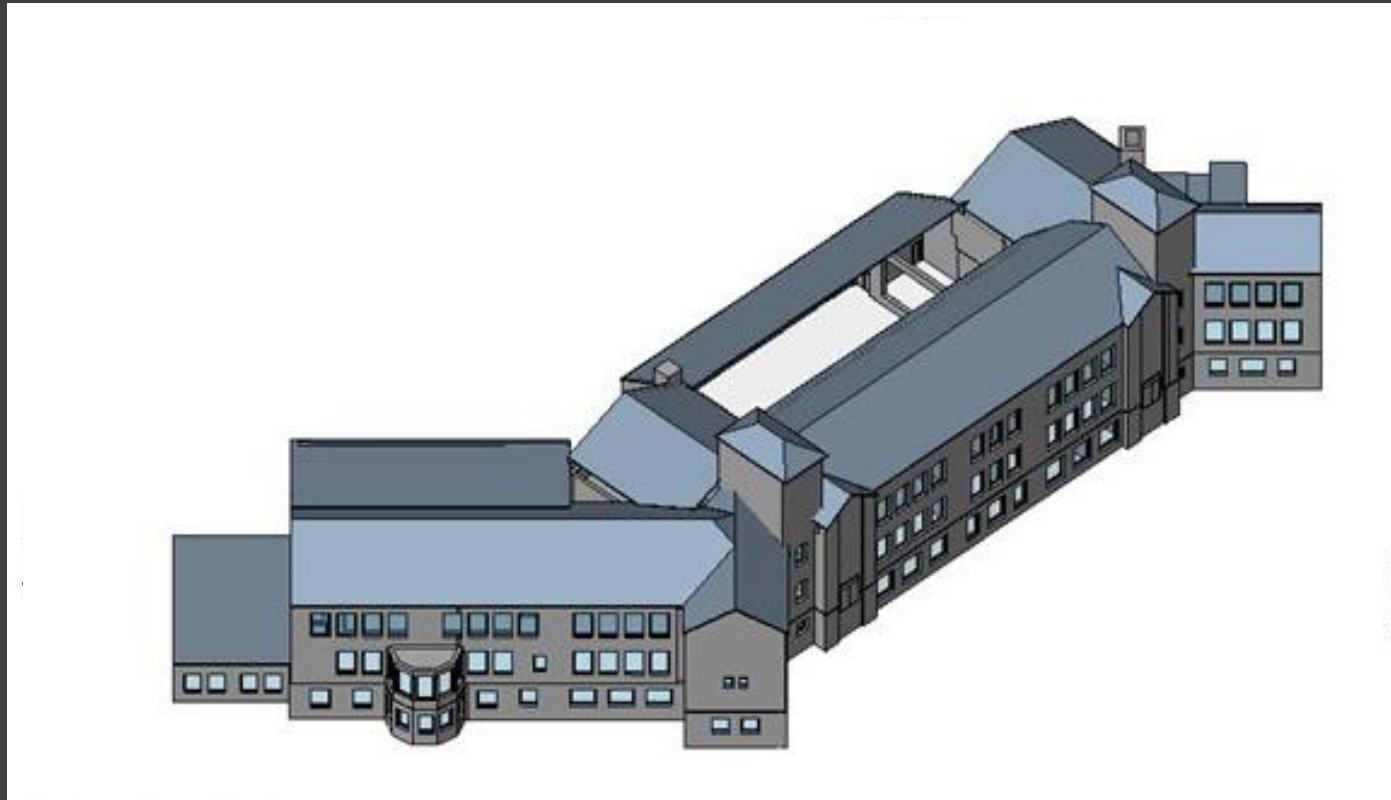
Hardware

- They lie
- Dual monitors
- Quad processor
- Video card
- Faster server
- More storage
- More bandwidth
- Faster network



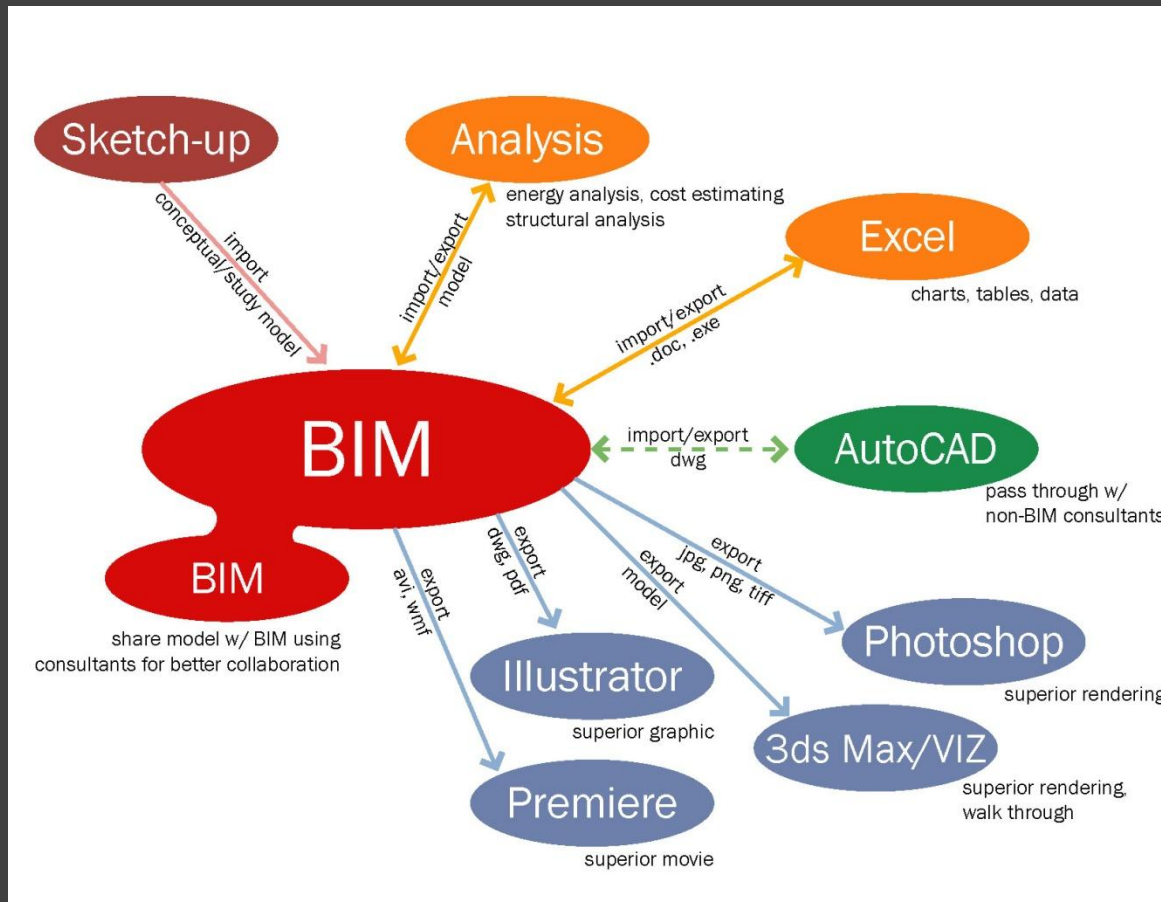
3D Scans

- Check references
- Clarify deliverables



Sharing the model

- Free viewer
- Exports easily



If we had it to do over again

- Replace hardware sooner
- Hire someone with prior knowledge.
- Start sooner



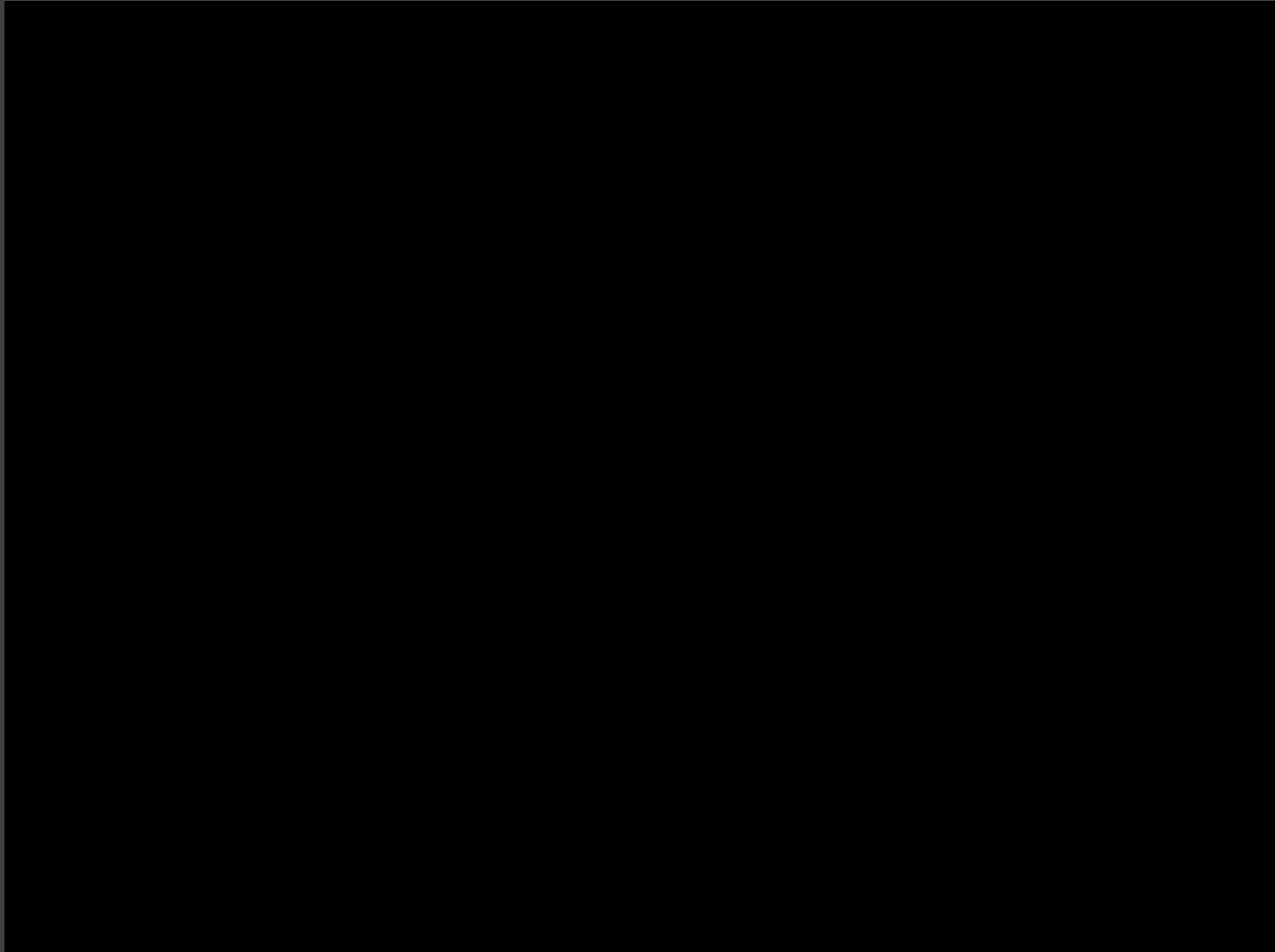
Pictures



Pictures



Why BIM?



Why BIM?

That was 5 years ago.